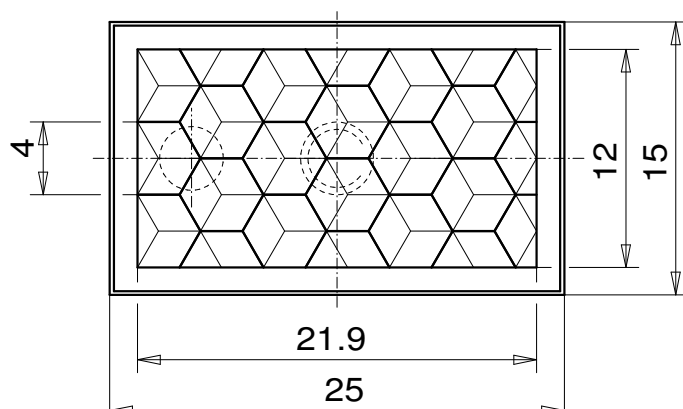
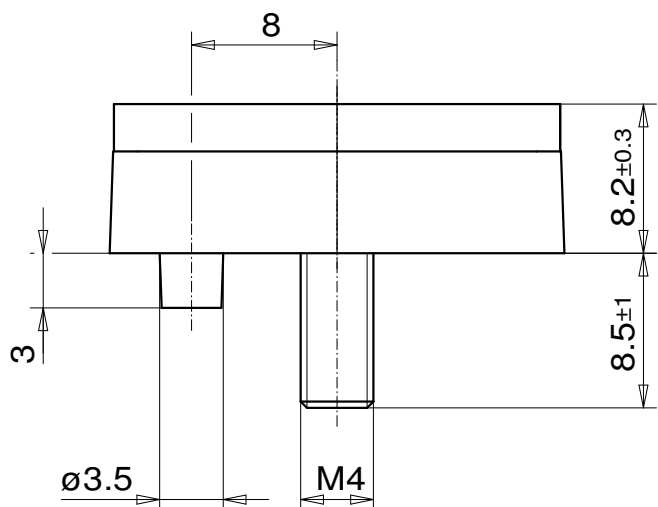


# Reflector for photoelectric sensor

## 15x25 LF M4 ZSB



### REFLECTOR DATA

Application	Reflector for photoelectric sensor
Item	15x25 LF M4 ZSB
Item no.	05262611

### TECHNICAL SPECIFICATIONS

Shape	angular
Size (LxWxH)	25x15x8,2 mm
Reflective size (LxW)	21,9x12 mm
Tolerance	TG5 [DIN 16742]
Mounting	Threaded bolt M4, 1.4301
Chemical resistance	Standard
Protection	IP67
Operating temp.	-20°C to +65°C
Surface	Standard
Optical structure	hexagonal
Optic size	Standard triple SW4
Polarizing rotation	yes
Application	Standard sensors

### MATERIAL DATA

Material reflector	PMMA clear
Material bracket	PMMA high impact white

### DESCRIPTION

The standard reflectors have highest reflection values and ranges. These reflectors are best suited for applications with standard sensors.