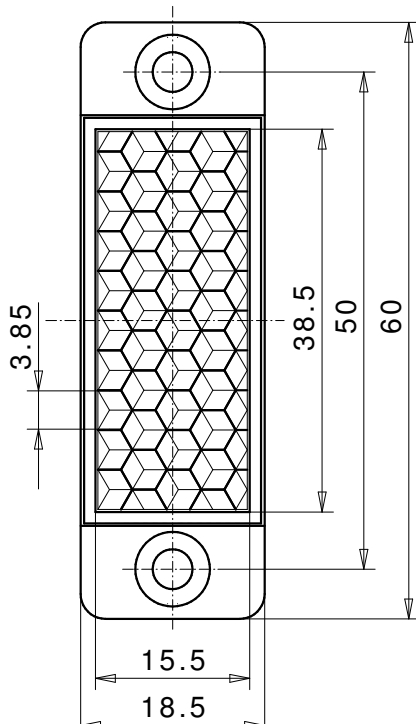
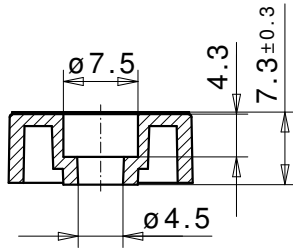




# Reflector for photoelectric sensor 18x40 LHF SW4 ZSB



## REFLECTOR DATA

|             |                                    |
|-------------|------------------------------------|
| Application | Reflector for photoelectric sensor |
| Item        | 18x40 LHF SW4 ZSB                  |
| Item no.    | 03292511                           |

## TECHNICAL SPECIFICATIONS

|                       |                     |
|-----------------------|---------------------|
| Shape                 | angular             |
| Size (LxWxH)          | 60x18,5x7,1 mm      |
| Reflective size (LxW) | 38,5x15,5 mm        |
| Tolerance             | TG5 [DIN 16742]     |
| Mounting              | to be screwed       |
| Chemical resistance   | Standard            |
| Protection            | IP68                |
| Operating temp.       | -20°C to +65°C      |
| Surface               | Standard            |
| Optical structure     | hexagonal           |
| Optic size            | Standard triple SW4 |
| Polarizing rotation   | yes                 |
| Application           | Standard sensors    |

## MATERIAL DATA

|                    |                        |
|--------------------|------------------------|
| Material reflector | PMMA clear             |
| Material bracket   | PMMA high impact white |

## DESCRIPTION

The standard reflectors have highest reflection values and ranges. These reflectors are best suited for applications with standard sensors.